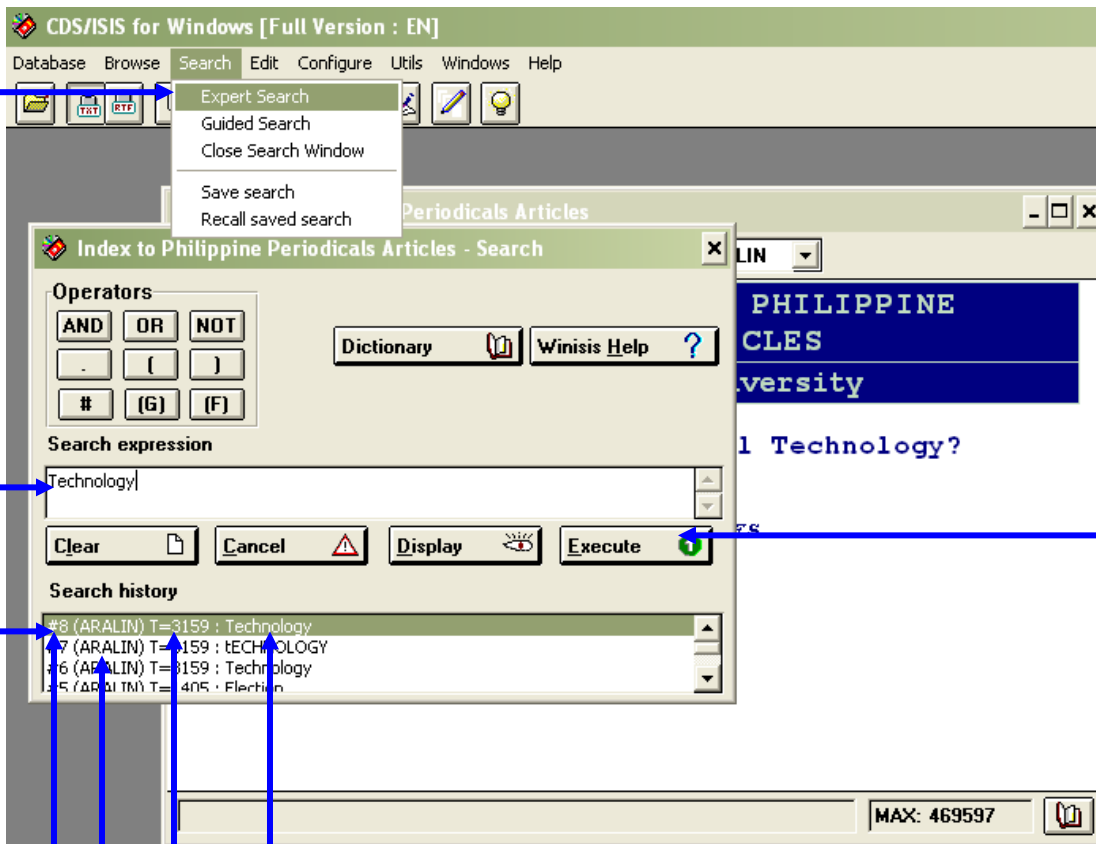


HOW TO USE THE CIPPA

1. Click **Search** and chose **Expert Search**.
2. At the **Search Expression** box, type the subject you want to search.
Example: Technology
3. Click **Execute** to view Search history.
4. A high-lighted entry will be seen at the **Search History** box.
Double click the entry.

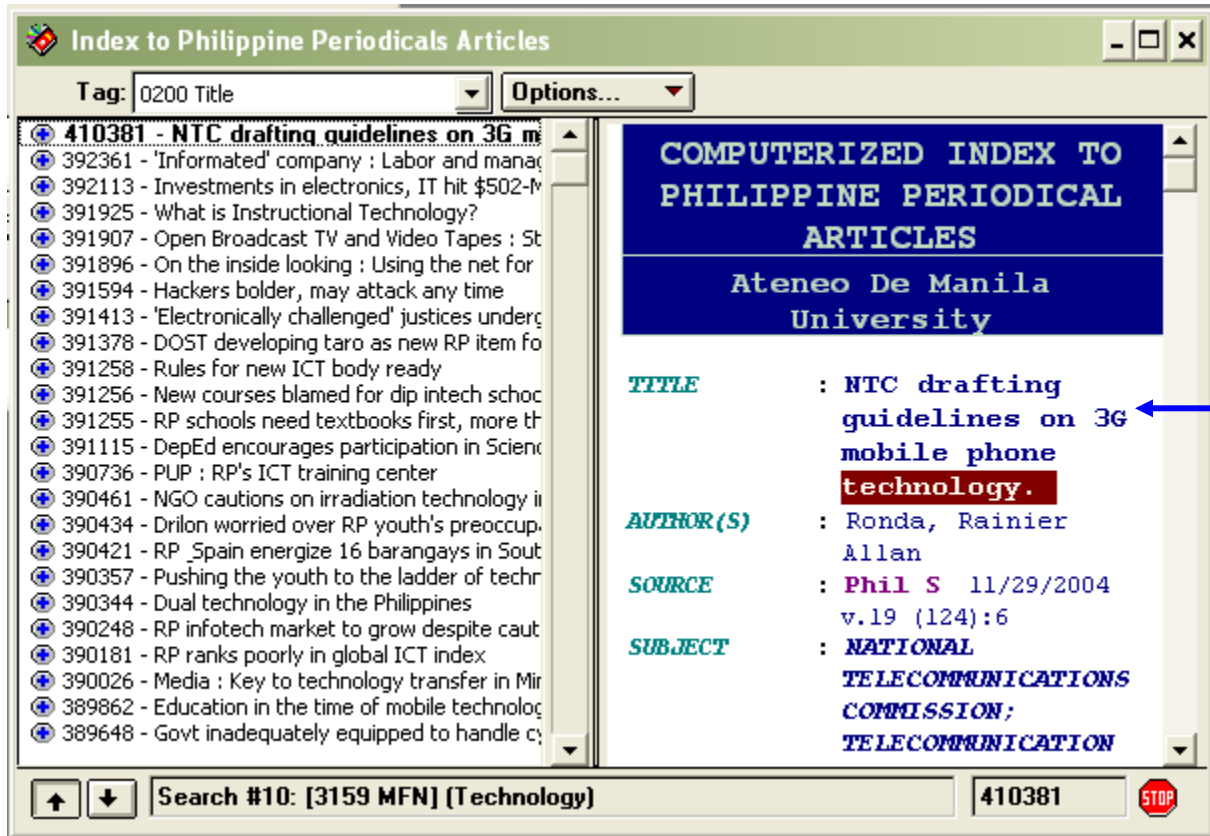


Search number.

Format.

Number of References.

Subject.



5. The first reference will be displayed.

Press

6. Repeat the process for the next search query.